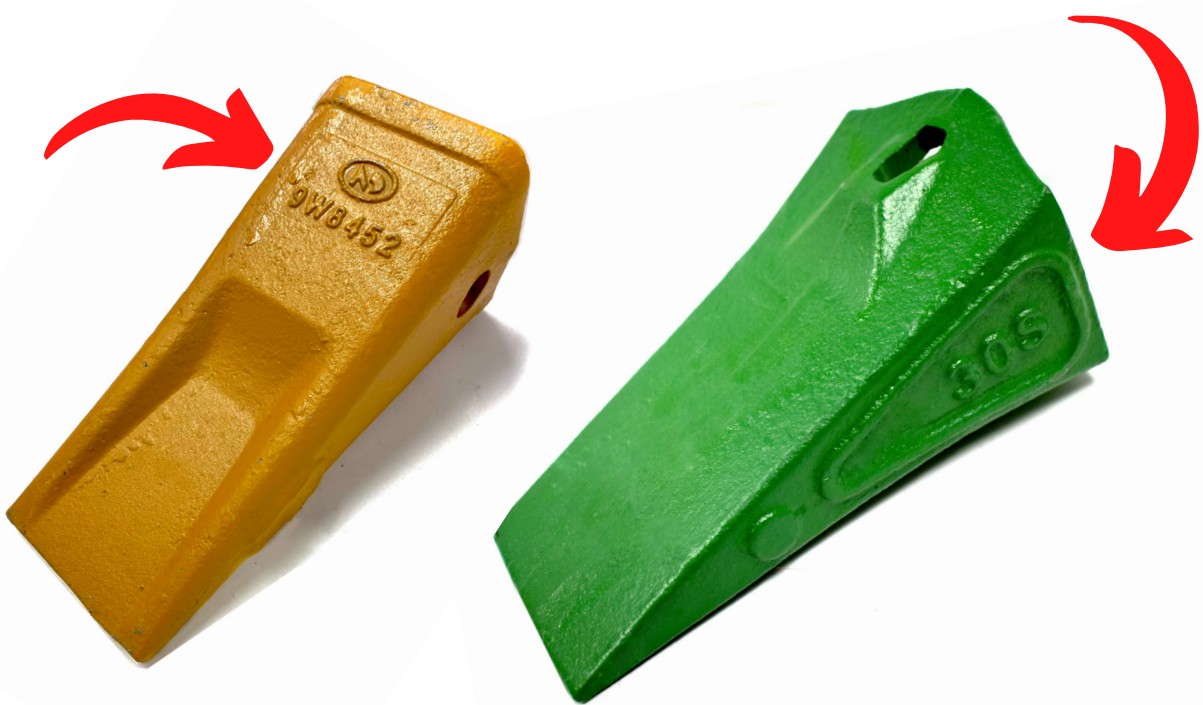


HOW TO IDENTIFY YOUR BUCKET TOOTH

PART NUMBERS



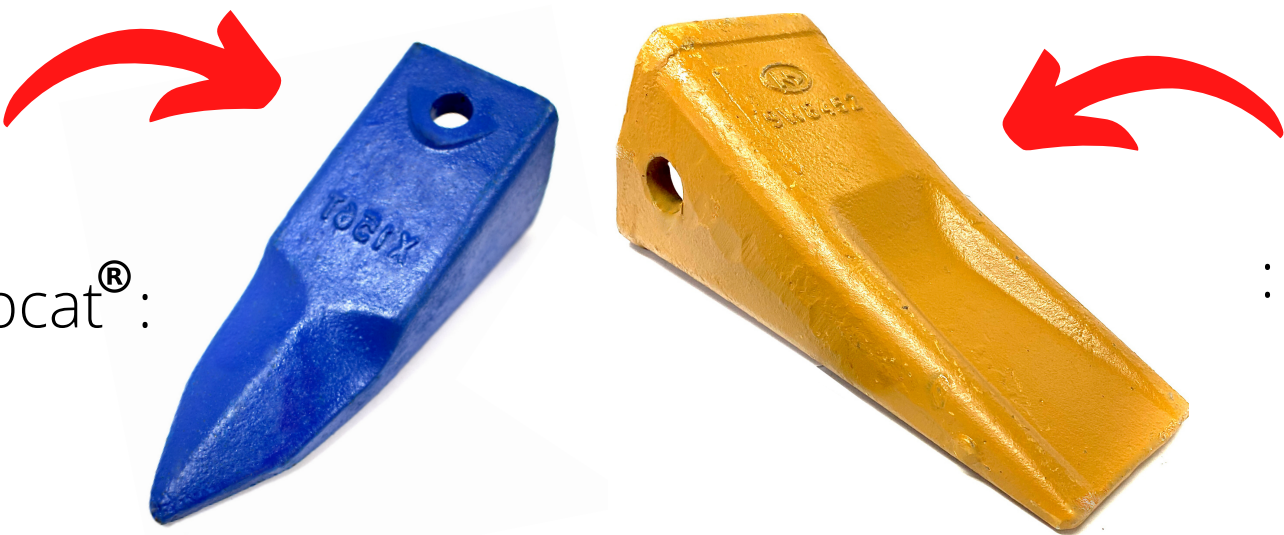
Most teeth have the part number cast onto the side or top face of the tooth. Often, worn teeth can have these numbers worn off too much to read. Make sure to check both the tooth and adapter for part numbers as your adapter can determine the series of tooth your equipment needs.



1

IDENTIFY IF YOUR TOOTH IS TOP OR SIDE PINNED.

Top Pinned
: ESCO® : Hensley® : Bobcat® :



Side Pinned
: CAT® : H&L® : John Deere® :

2

IDENTIFY YOUR PIN STYLE



Pin + Retainer
: CAT® J Style :



Pin + Lock
: ESCO® Conical Style :

Flex Pin
: H&L® Style :
: Esco® Super V :
: Bobcat® : John Deere® :



Steel Keeper
: Hensley® Style :



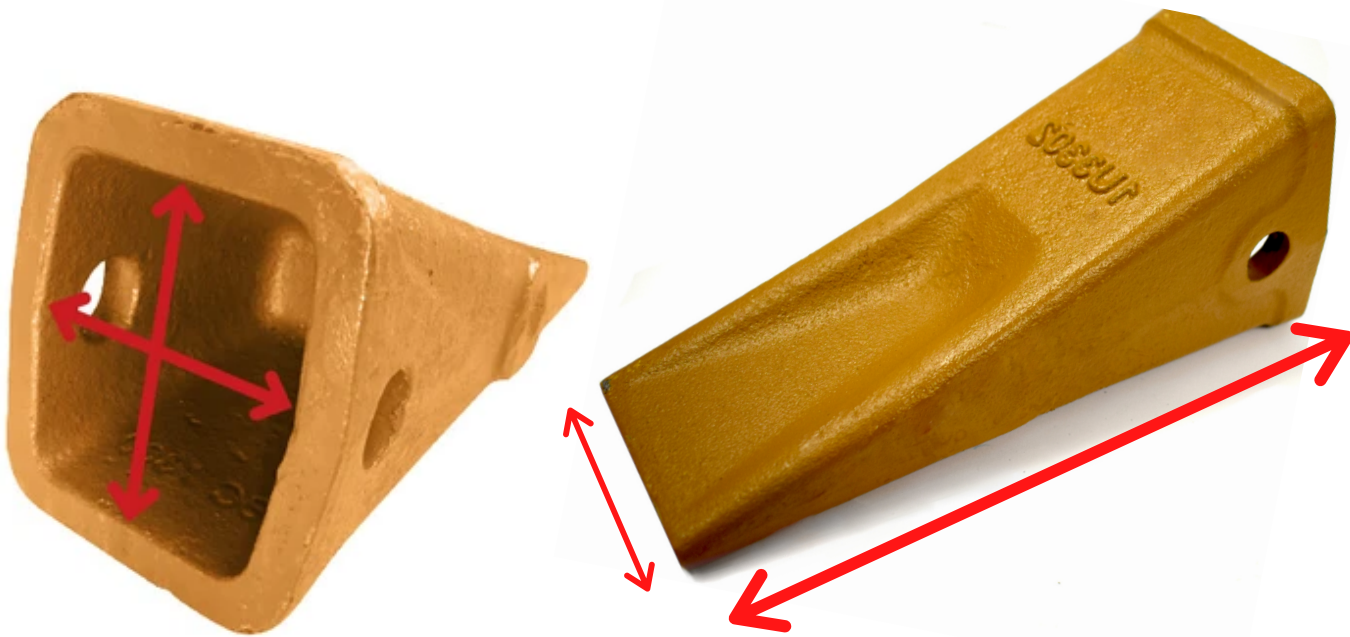
Roll Pin
: Hensley® Style,
156 series :



3

CHECK YOUR MEASUREMENTS

The measurements of the tooth can help you determine the series and model of the tooth. The interior of the pocket is a great place to start as this area sees the least amount of wear over the life of the tooth. We offer PDF product guides on our website for comparison.



ALL MANUFACTURERS NAMES, NUMBER, SYMBOLS & DISCRIPTIONS ARE USED FOR REFERENCE PURPOSES ONLY. IT IS NOT IMPLIED THAT ANY PART LISTED IS A PRODUCT OF THESE MANUFACTURERS.

NEED MORE HELP?

Just send an email to info@alltechpro.us
Please provide photos of the tooth or adapter in question so we can assist in identifying it as quickly and accurately as possible.

